

# **Samcrete Building Systems**

## **Company Profile**

**July, 2020**

## General Overview

Samcrete Building Systems was founded in 1986 as the first Precaster in Egypt, since then it became a major expression into the world of “**Building Systems**”.

Today, Samcrete Building Systems has five factories in Sadat City and one in 6<sup>th</sup> of October City embracing 170 employees.

In addition to Hollow core slabs the factories produce retaining wall components, blocks, curbstones and interlocks known for quality and engineering innovation to be used across a wide variety of building designs.

Samcrete has added 3 new factories (T-Wall Molds, Tilting Table & Knauer - Model/multimaster) satisfying markets' needs concluded from marketing researches & potential investment studies in Egypt and in neighboring Africa.

Samcrete Building Systems commitment to innovate not only the methods but also the materials of the industry has contributed to the success and sustainability of the company.

## Vision

To be the market leader in engineering building solutions and the partner of choice for major contracting and development companies

## Mission

Delivering creative value engineering portfolio that always exceeds industry expectations. Striving for excellence at healthy and rewarding work place for talented and motivated employees to achieve sustainable growth and expansion.

## Values

- Excellence
- Innovation
- Consistency
- Diligence
- Collaboration
- Quality

## The Team

Samcrete Building Systems team consists of 170 employees with the following distribution

### Headcount Distribution

- Head Office	<b>26</b>
- 6 <sup>th</sup> October Factory	<b>36</b>
- El Sadat Factory	<b>108</b>

Following the general vision of the group, Samcrete Building Systems believes in investing in people. We give genuine special attention to our staff, being the most valuable asset of the company. This is clearly reflected on the percentage turnover which tends to be lower than any standard level in the industry.

As part of our responsibility to our people, during the hard times following January 25th 2011 revolution, not one single employee in the group has been affected. Moreover, we coped with the price escalation and the increase in the cost of living with adjustments to the employees' income that brought them to a dignified level of living.

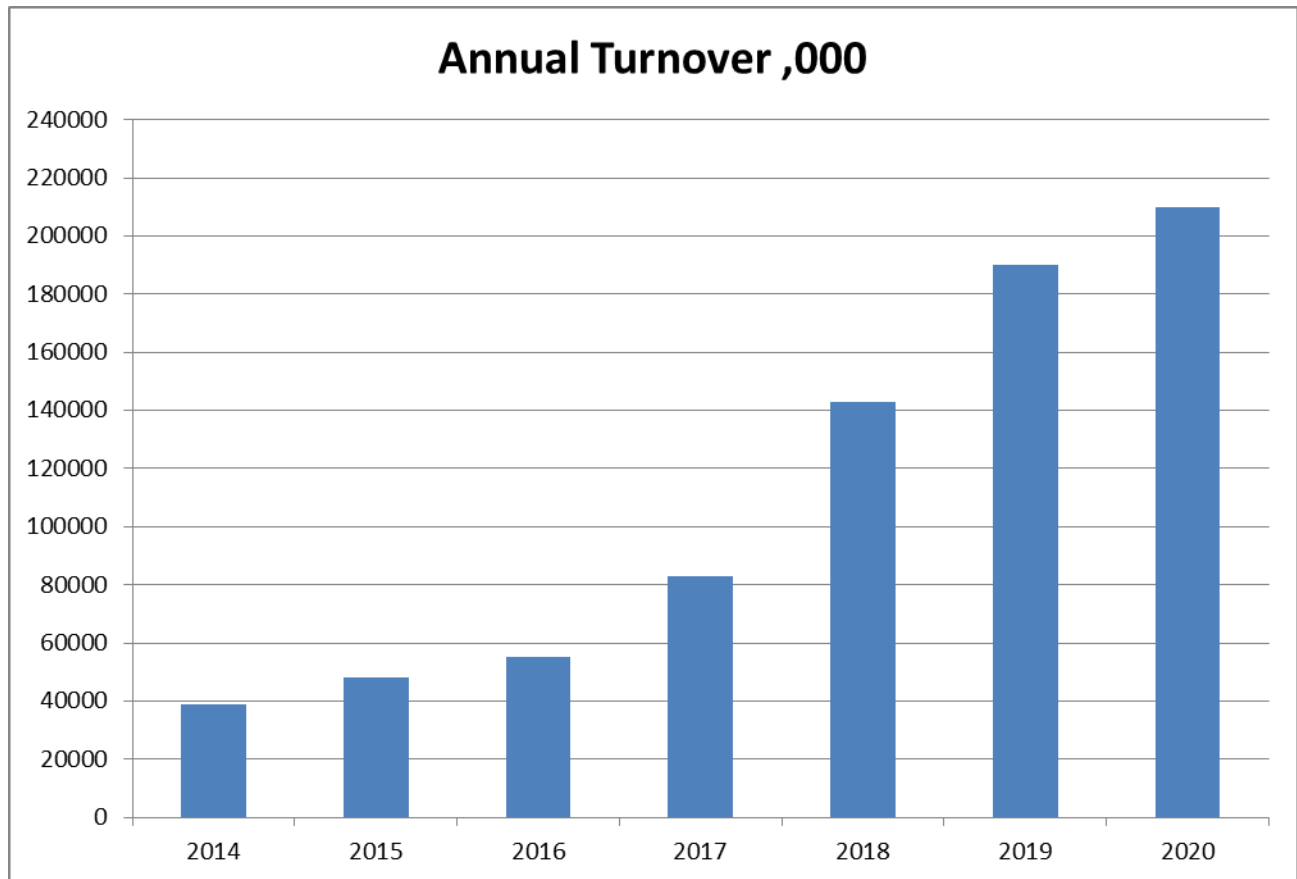
Moreover, we provide our employees with:

- Full medical coverage – in addition to free treatment of Virus C.
- Free primary education to illiterate workers.
- Giving extra attention to employing people with special needs.
- Our corporate social responsibility covers a wide range of activities that affect communities affected and surrounded by our physical presence.

## 1. Sales and Marketing Strategy

In the past 32 years, Samcrete Building Systems has established its position in the market as a premium quality supplier of building materials and services. Leading the industrial division of the Sami Saad Group, **SBS** has strong and well established ties to the supply chain stake holders from one side and with the clients and business partners from the other. Having, mostly, a business-to-business model, with strong engineering background and sister companies portfolio, **SBS** is in essential player in the field and synonymous to quality and reliability. We offer not only products and solutions, but also working in collaboration and partnership with our client to reach the optimum solution, weather it is a standard product or a customized one, with a strong focus on highest value and maximum profitability.

### Turnover 2014-2020



## 2. Management Systems

## **Quality**

Samcrete Building Systems precast products are synonymous with high quality. Every product is certified by a notified national body. Conforming to the international standard ISO 9001 (CEN 29001), the quality assurance of design and manufacture is based on the principle of self-control and is certified by a third party.

Our Quality Control measures precast products' characteristics and ensures they bear on the ability to satisfy the client's needs and requirements. **SBS** internal quality control service is continuously checking the concrete strength, positioning of the reinforcement and inserts, dimensions of the units and finishing for every product.

All data is registered in files and is available to customers and certification bodies, according to our Quality Assurance Manual and Quality Control Plan.

We measure our "quality level" in terms of performance in health and safety, service ability, aesthetic, etc. The requirements are stated clearly in our method of statements, per the contract specifications and/or relevant international codes.

The objective of **SBS** QA/QC system is to maximize predictability and consistency of quality of precast components so as to ensure they are up to a required standard.

## **Industrial Risk Assessment**

The identification of hazards and the industrial risk assessment related to our activities and that have an impact on the Safety and Health of employees have been described in the risk assessment procedure.

It allows the elaboration of the Health and Safety Management Plan on the sites according to applicable regulatory provisions.

## **Legal and Other Requirements**

In order to ensure that the activities are carried out in compliance with applicable laws, a regulatory watch is carried out. The regulatory watch procedure describes the means and methods for identifying and accessing regulatory texts.

Upon the operation of the site, the Managers and site managers do as necessary to review and implement specific requirements relating to his activity, per our Safety Plan.

### 3. Factories

#### ▪ Sadat Factories

First Industrial Zone, Sadat city. Area of 120.000 m<sup>2</sup>. The Factory consists of 5 production lines with all related facilities, laboratory and equipment:

**Besser 1**- Model V3-12F727, made in USA:

Produces different sizes and colors of solid and hollow concrete blocks.

**Besser 2** - Factory Model V3-12F727, made in USA:

It produces different sizes and colors of solid and hollow concrete blocks.

**Spancrete** - Model 5108-C, made in USA:

It Produces precast pre-stressed hollow core slabs of thicknesses from 10 to 30 cm and lengths up to 15m according to the design.

**Zenith** - Model HB940S-100AH, made in Germany:

It Produces curbs and decorative blocks with different sizes and colors for retaining walls.

**Wetcast** – Tilting tables, special molds, Taylor made production.

**T Wall** – Special mold.

**L Wall** – Special mold.

**Wheel Stopper** – Special mold.











## 6<sup>th</sup> October Factory

e<sup>2</sup> Industrial Zone, in 6th of October city, is of area 50,000 m<sup>2</sup>. Specialized in the production of concrete blocks the factory is hosting a performing Steel Workshop as well operating under the name National Engineering Industries.

The production line is operating since 2011 and other lines are currently under study:

**OMAG** – Model Tronic 140/100, made in Germany:

It produces solid & hollow concrete blocks and paving interlock tiles.







**Knauer** - Model /multimaster, made in Germany:

It produces solid & hollow concrete blocks and paving interlock tiles.

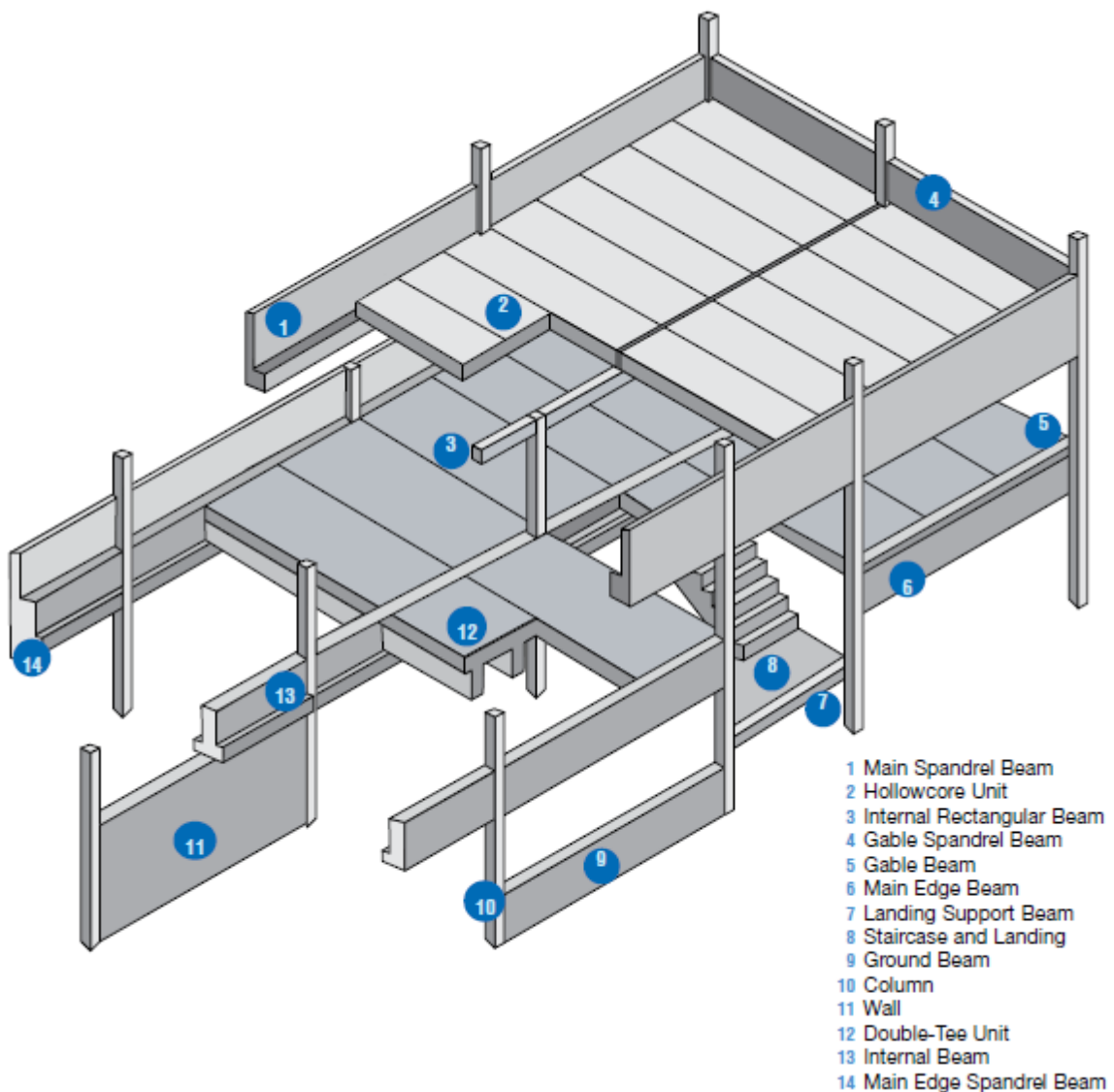


## 4. Samcrete Building Systems

### 4.1. Integrated Building System

By using Bearing walls system made of hollow / solid concrete bearing blocks and precast pre-stressed hollow core concrete slabs for roofs. This system can be used in buildings up to 5 floors.

The annual Production capacity is 11 million blocks, which is equivalent to 500,000m<sup>2</sup> of buildings / Year.





#### 4.2. Integrated Structure System

Precast columns & Precast pre-stressed beams. This system is qualified for industrial constructions, administration buildings and multi-story garages.

The current annual Production capacity is of 24,000 m<sup>2</sup> of Buildings.

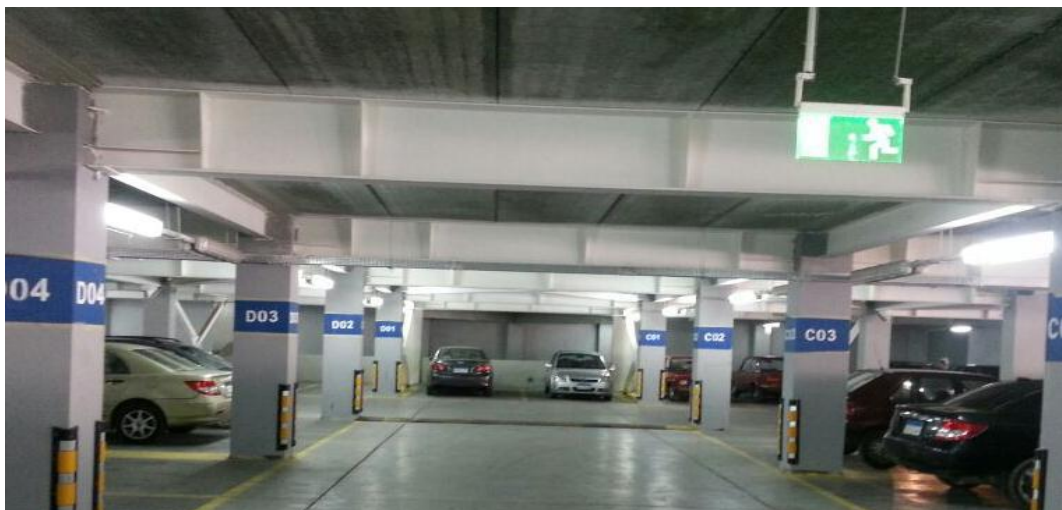


#### 4.3. Samcrete System for Roofs

Precast pre-stressed hollow core concrete slabs which can be used with multiple construction systems.

It can be used with load bearing walls, traditional concrete structures, precast concrete structures or steel structures.

The annual production capacity is 100,000 m<sup>2</sup> of hollow core slabs with thicknesses of 10, 15, 20 & 30 cm and lengths up to 15 m according to the design.





#### 4.4. Samcrete System for Walls & Fences

Precast pre-stressed hollow core concrete slabs which can be used as facades' cladding or construction of fences using precast or cast in situ columns.

New offer under industrialization based on panels and/or L wall. Expected capacity up to 150,000 m<sup>2</sup> per year.



#### 4.5. Samcrete System for Retaining Walls

Precast pre-stressed hollow core concrete slabs which can be used as retaining walls in grain stores or soil.

Used with precast concrete or steel columns. New offer based on T Wall and retaining panels with footing





#### 4.6. Samcrete System for Pavement & Sidewalks

Interlock paving blocks with different shapes and colors:

- Annual production capacity is 420,000 m<sup>2</sup>.
- Curbs of sidewalks: Annual production capacity of 120,000 l.m.





#### 4.7. Samcrete System for Landscaping Works

Using interlocking retaining wall units for slopes with different shapes and colors.

Annual production capacity is 170,000 blocks which is equivalent to 22,000 m<sup>2</sup>.



#### 4.8. Samcrete System for Flat precast products (Reinforced concrete Panels)

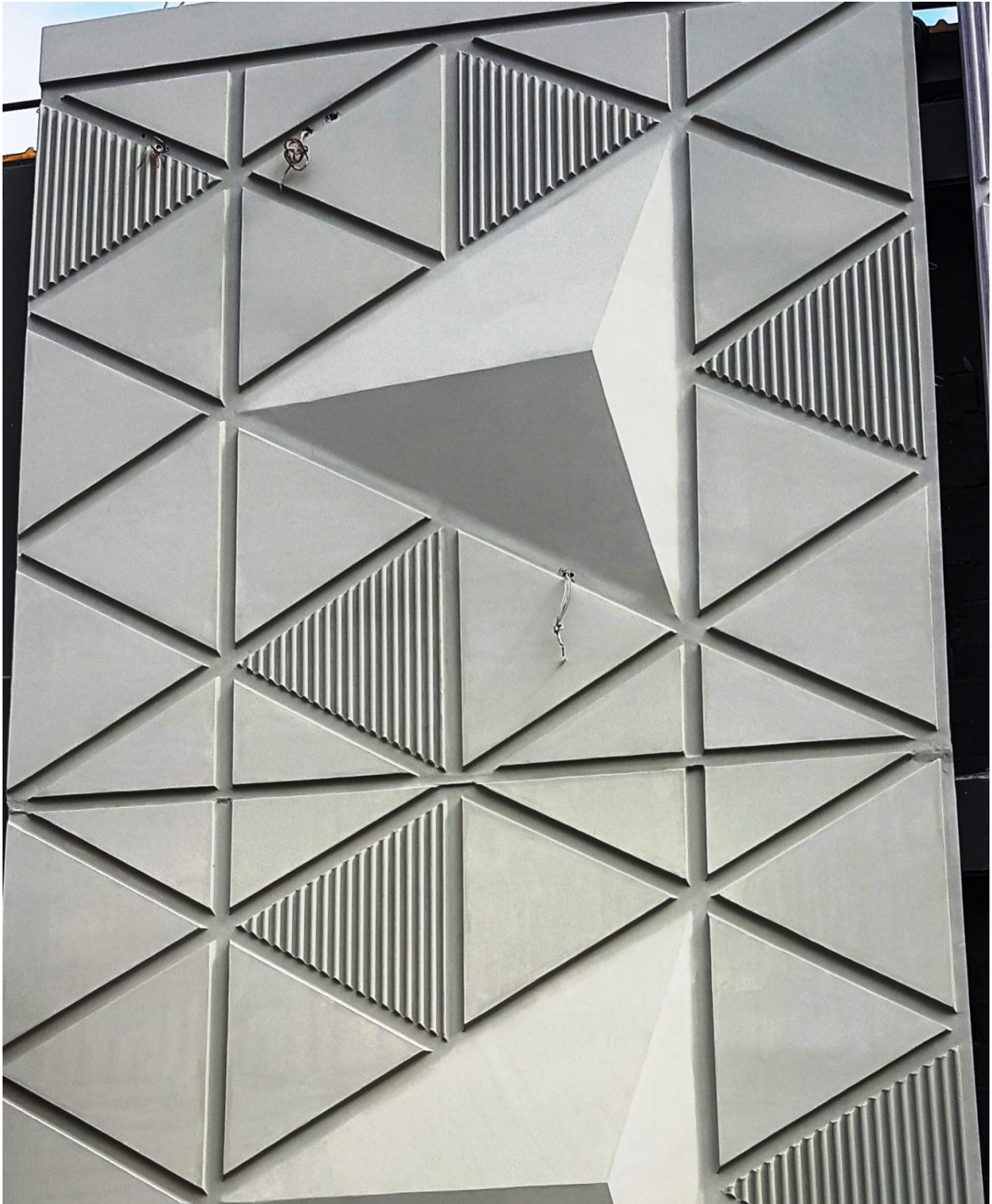


Using hydraulically operated tilting tables, Samcrete Building Systems will soon be able to produce flat concrete panels to be used in different applications ranging from precast fences, wall bearing structures, cladding and precast facades. Nominal production capacity of the new line is 70,000 m<sup>2</sup> of panels per year in 2 shifts.



- **Cladding Sample**





## 5. List of Projects

### **5.1 Samcrete Integrated Building System “Bearing Walls & Hollow core slabs for roofs”**

- Pyramids Heights – Giza City
- Secon Nile Tower - El-Maadi Corniche El-Nile
- Layan Compound – New Cairo
- Pyramids Heights Residences
- National Center for Examination in Al Mokattam.
- Proctor & Gamble Factory in 6<sup>th</sup> of Oct. city
- Top Food Factory in Sadat city
- San-Stefano Hotel in Alexandria
- Microsoft Premises at Smart Village
- Dar Al Fouad Hospital in 6<sup>th</sup> of October city
- Hurghada Tourism Center
- Four Seasons Hotel in Cairo
- Alexandria Library
- Sonut Factory (Schweppes) in Sadat city
- EGA Factory (Mercedes) in 6<sup>th</sup> of Oct. city
- Public Schools in Giza, Cairo, Menoufia and Dakahlia
- Presidential Guest House, Slalom and Cairo / Alexandria desert road
- Buildings, warehouses & villas at Dina Farms.
- Al Mastaba Tourism Resort in Hurghada.
- Fancy Food Factory.

### **5.2 Samcrete Integrated Structure System “Columns, Beams & Hollow core slabs for roofs”**

- Small Industries Project at Industrial Development Group (IDG) in 6<sup>th</sup> of October city.
- Administration Buildings for Concrete products Factory in 6<sup>th</sup> of October city.

### **5.3 Samcrete System for Roofs**

- Transportation Hub -New Capital

- Hall 8000 – New Capital
- New Olympic City Stadium – New Capital
- West of Shorouk – Shorouk City
- Corona Factory – 6<sup>th</sup> of October
- Spinning & Weaving Factory -El Robiky.
- Electrical Power Plants in Kuraymat, Sidi Kreir, Sharm Al Sheikh, Mahala & Abu Zaabal
- Steigenberger Al Dau Beach Hotel, Hurghada
- Expiry & Max Hotel in Hurghada
- Three Pyramids Hotel in Giza
- Water Treatment Plants in Sinai, Hurghada, & Red Sea
- Hobas Pipe Factory at al-Kattameya
- Al Wadi Holding Co. in Sadat city.
- Hurghada International Center
- El-Wadi Holding Co. – Chicken Farms
- Ceramic Al Gawhara in Sadat city
- Smart Village – Administration Buildings
- Mall of Arabia - Commercial Center in 6<sup>th</sup> of October city.
- Carrefour Commercial Center in Maadi & Shorouk city
- School of “Lycee Francais” in Maadi
- “Badr Al Din” Petroleum Company’s Camp, Abou Al Gharadic
- B.B.C. School, Belbes.
- Pyramids Heights project, Cairo / Alexandria desert road.
- Head Office of Samcrete.
- German University in Cairo (GUC) at New Cairo city.
- American University in Cairo (AUC) at New Cairo city.
- Nucle Factory in 6<sup>th</sup> of Oct. city.
- Al Galaa Hospital.
- Egy Food Factory.
- Holztech Factory, 6<sup>th</sup> Of October City
- Commercial Administrative Residential (4) Buildings - Housing project – West El Shorouk.
- Building of Complex Restaurants - West El Shorouk.

- Telal Villas Ain El Sokhna.
- Egyptian Iron Factory - Ain El Sokhna.

#### **5.4 Samcrete System for Retaining Walls & Fences**

- 10<sup>th</sup> of Ramadan Land – Security Fence
- M Squared Trio Gardens – New Cairo
- M Squared Masyef Resort – North Coast
- Palm Hills – New Alamien
- ASGC Alamien Towers – New Alamien
- Hassan Allam Properties – Mostakbel City
- Pre The Brooks – New Cairo
- Pyramids Heights – Giza City
- Sewedy University – New Capital
- Administrative Control Authority – New Capital
- Sharm El-Sheikh Security Fence
- Cairo Metro Line – Abo Rawash
- Grain Silos at Dekhila port.
- Water Treatment Plant in Hurghada.
- Electric Power Generation Plants at Kafr Al-Dawar & Nubarya.
- Al Sharkeya Tobacco Company at 6<sup>th</sup> of October city.
- Sedeco Company at 6<sup>th</sup> of October city.
- Parfico Factory at 6<sup>th</sup> of October city.
- Fayoum University in Fayoum city.
- Shark Al Tafria Port in Port Said.
- Pyramids Heights Project, Cairo/ Alexandria desert road.
- Up Town Cairo Project at Mokattam
- Porto Mattroh Fences.
- Navy Forces in Aby Keer & Adcou Ports
- TOYOTA Factory Fence in Sadat city.
- Stores of metro lines in the areas of Abu Rawash and Peshtil.
- The Fences of the sides of the Ring Road in the spaces between Mostorod , Al-Marg and Autostrade , Al-Munib

- 6<sup>th</sup> of October Customs
- Aurelia City.

### **5.5 Samcrete System for landscaping works**

- Hacienda Bay – North Coast.
- Cairo International Airport.
- Gyanaklis Airport, Alexandria.
- Smart Village, Abu Rawash.
- Crystal Asfour Factory in kalyoubya.
- Industrial Zone “e2” in 6<sup>th</sup> of October city.
- Youssef Abbas road Nasr City, Maadi Helwan road, Al Haram road in Giza Governorate, International Coastal road, Al-Korneish road Al-Oksor & Cairo - Alexandria desert road.
- Marassi North Coast Project.
- Wadi El-Natroun Prison at Cairo-Alex .desert road.
- Electrical Power Plants in Hurghada, Red Sea & Sinai.
- Hotel of “Information Center of the Ministers’ Council “in Alexandria.
- Stone Park New Cairo.
- Palm Hills North Coast.
- Vidaa Gardens- 6th of October.
- Landscape Project in Giza Governorate.
- Al-Asmarat District in Kattameya.
- Pyramids Heights Project at Cairo/ Alexandria desert road.
- Cairo / Alexandria desert road.
- Olympic Village at New Cairo city.



# Thank You